

DAIMLER TRUCK PARTS

EDITION 2 | 2024



OFFERS AVAILABLE: 12TH JUNE TO 30TH SEPTEMBER 2024

DAIMLER TRUCK

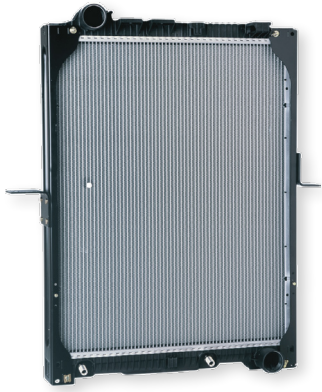


FREIGHTLINER®

FUSO



SFTP Radiator



A9615001000 • Suits: Actros MP5 • **\$2302.64**

Brake Pads



A960420032011 • Suits: MP4/5 Actros • **\$367.91**

SFTP Belt Tensioner



A4722001370 • Suits: MP5 Actros • **\$1010.78**

Air Dryer Filter



A0004292497 • Suits: Actros MP4 & Eonic E5 & E6 • **\$300.77**

Pollen Filter



A0008303418 • Suits: Actros MP3 • **\$158.09**

Air Filter



A0040949604 • Suits: Actros MP4 • **\$542.26**

Mercedes-Benz Genuine Remanufactured Parts.

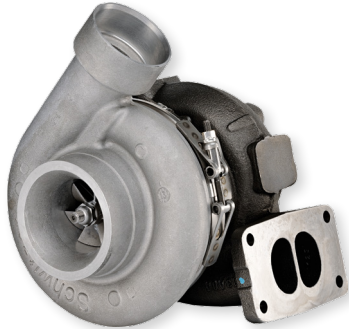


UP TO 25% SAVING*

Plus save up to a further 15% on Genuine Remanufactured Parts on return of older unit.

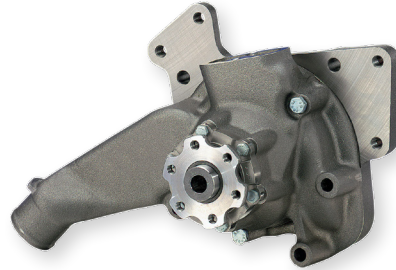
Mercedes-Benz Reman Parts

Turbo Charger



A473096189980 • Suits: MP4 Actros • **\$4229.73**

Water Pump



A472200100180 • Suits: MP4 Actros • **\$671,58**

Belt Tensioner



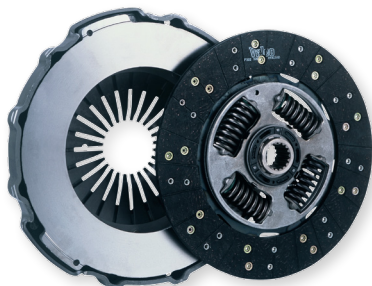
A470200167080 • Suits: mp5 Actros) • **\$786.87**

Alternator



A015154630283 • Suits: mp5 Actros • **\$806**

Clutch



A030250090180 • Suits: Atego • **\$24,372**

Starter Motor



A007151610181 • Suits: Atego • **\$618**

*Percentage saving is based on the price variance of Mercedes-Benz Genuine versus Mercedes-Benz Reman from the 12th June to 30th September 2024 price list. Used parts are taken as a core return payment, provided that they meet the latest return criteria. Ask your Mercedes-Benz Truck dealership for full details.



Leaf Spring Assembly - 46,000lb, Airliner



QFLC A16-22081-000 • Suits: Argosy • **\$1,177**

Leaf Spring Assembly - 46,000lb, Parabolic



QFLC A16-19722-003 • Suits: Argosy • **\$2,188**

Cab Tilt Cylinder



QFLC 18-37233-000 • Suits: Argosy • **\$1,605**

Coronado Dash Mat



B64681201 • Suits: Coronado • **\$239**

Belt Tensioner -8K



QFLC 01-27425-000 • Suits: All models • **\$453**

Belt Tensioner -10K



QFLC 01-27846-000 • **\$436**

Reman DIF RP26185 4.56



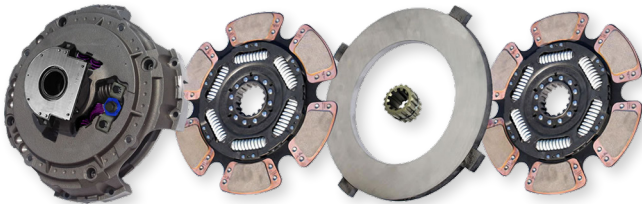
QABP REMRP26185456 • Suits: All makes • **\$18,700**

Reman DIF RRL261854.89 W DCCL



QABP REMRRL26185489 • Suits: All Makes • **\$10,560**

Clutch 15-1/2 X2 4K/2050



QABP N25EA60289TPCBW • Suits: DD13/DD15 Engine • **\$ 1,809**

10L ADBLUE



QABP ADBLUE10 • Suits: All Makes • **\$33**

Clutch Damper



QME540445 • Suits: Canter • **\$567.01**

Radiator



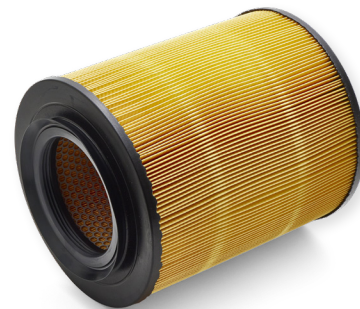
QME418737 • Suits: Fighter • **\$2078.93**

Air Compressor



QME308560 • Suits: Fighter • **\$3538.45**

Air Cleaner Element



QME423319 • Suits: Rosa BE64D • **\$64.99**

Seat Belt Assembly



QMK297284 • Suits: Rosa BE649/BE64D • **\$370.11**

Air Cleaner Element



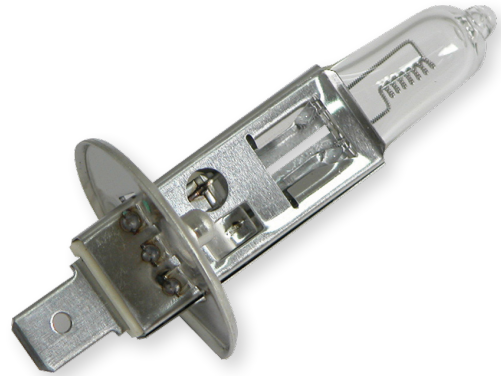
QML242294 • Suits: Canter FEA/FEB/FEC/FGB • **\$58.03**

Air Filter



QY000002 • Suits: Older Fighter • \$ 103.52

Headlamp Globe



QY012033 • Suits: Fighter • \$19.65

Wiper Blade



QQY012014 • Suits: Canter • \$16.24

Water Pump Kit



QY010001 • Suits: Rosa/Canter BE649/FE/FG • \$335.68

Front Brake Pad Kit



QY002031 • Suits: Rosa BE649/BE64D • \$226.45

V-belt



QY009006 • Suits: Fighter FK/FN/FM • \$46.82

Drag Link



A6864600205 • Suits: Actros • **\$267.41**

Front Fog Lamp (RHS)



A6868200256 • Suits: Actros • **\$255.96**

TP wiper blades



A6868200045 • Suits: Atego • **\$41.97**

Brake Disc Kit



A6864200720 • Suits: Actros MP1-3, Atego 1-3 & Axor 2-3 • **\$238.67**

Air Bellows



A6863200221 • Suits: Actros MP1-3, Atego 1-3 & Axor 2-3 • **\$1007.12**

Main Mirror Right Hand Side Only



A6868110033 • Suits: Actros MP1-2, Atego 2-4 • **\$158.20**



Spring Brake Chamber Type 30-30 Sealed



QBPA 3030KSEALED • All Makes • **\$55**

Service Brake Chamber Type 30



QBPA 30K • All Makes • **\$55**

Spring Brake Chamber Type 24-30 Sealed



QBPA 2430KSEALED • All Makes • **\$25**



Reman Rtlo-20918b Transmission



QETN REM20918B • All Makes • **\$25,586**

Reman Rtlo-22918b Transmission



QETN REM22918B • All Makes • **\$12,862**

Kit Clutch Installation



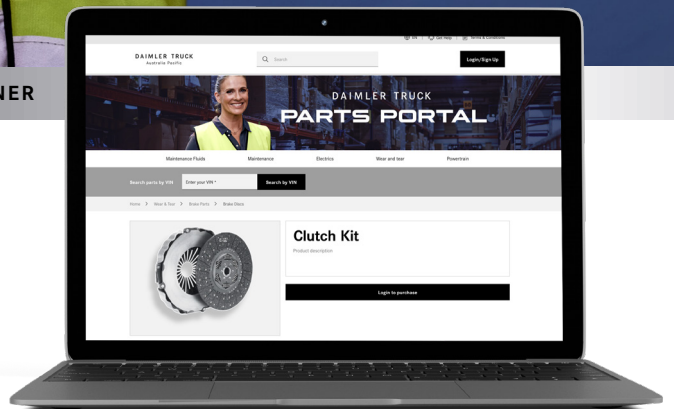
QBPA 3030KSEALED • All Makes • **\$1,377**

The offers presented in this catalogue are subject to stock availability during the promotion period and are available at Daimler Truck participating dealerships only. Participation can be determined by calling 1800 033 557 or by calling your nearest dealership. Parts listed may be VIN specific, parts advertised have been identified to suit the majority of the models specified. Part numbers should be checked against the VIN to ensure suitability. For assistance, please contact your nearest participating Daimler Truck dealership prior to purchase. Prices within this promotion are recommended maximum selling prices including GST, excluding labour and fitment costs from a participating dealer. Prices will be valid during the promotion period stipulated at the front of this catalogue. All items have been included in good faith on the basis that they will be available during the promotion period. Photographs are for illustrative purposes only and may not represent actual products. We reserve the right to correct all printing errors. Where third party images and content appear, this has been done with the appropriate approval. Mercedes-Benz, Mercedes-Benz Genuine Remanufactured Parts and TrucksParts by Mercedes-Benz are registered trademarks of Daimler AG, Stuttgart Germany. Fuso and Fuso Value Parts are registered trademarks of Mitsubishi Fuso Truck and Bus Corporation, Japan. Freightliner and Alliance Truck Parts are registered trademarks of Daimler Trucks North America LLC, all distributed by Daimler Truck Australia Pacific Pty Ltd. ABN 86 618 413 282.



GENUINE TRUCK PARTS FOR MERCEDES BENZ | FUSO | FREIGHTLINER

Our all new eCommerce platform allows you to find, search and buy the parts you need at the click of a button. Saving you time running or ringing around town, so you can focus on the important stuff.



DAIMLER TRUCK PARTS PORTAL



GENUINE TRUCK PARTS FOR MERCEDES BENZ | FUSO | FREIGHTLINER VISIT : [DAIMLERTRUCKPARTSPORTAL.COM.AU](https://daimlertruckpartsportal.com.au)

- Order online and get parts delivered direct to your door
- Purchase extensive range of critical parts 24/7
- Full order history for easy ordering efficiency
- Competitive pricing
- VIN search capabilities



SCAN TO SHOP NOW OR VISIT,
[DAIMLERTRUCKPARTSPORTAL.COM.AU](https://daimlertruckpartsportal.com.au)

DAIMLER TRUCK
) CUSTOMER SOLUTIONS

THESE PARTS AND MORE ARE
NOW AVAILABLE FROM OVER
50 DEALERS NATIONWIDE



To locate your closest dealer call 1800 033 557
or visit www.alliancetruckparts.com.au/Dealer-Locator



SUBSCRIBE

to the **FREE** must have Daimler Truck Parts Catalogue.
www.alliancetruckparts.com.au/Parts-Catalogue